

第32回 東海ライブ研究会

32th TOKAI LIVE

症例集

オンライン

東海道
五拾三次
元舟
二川

廣重画




2025年1月31日(金)

症例集

オンライン



Global Live Case2 60's male

Target Lesion: Ost. LAD&diagonal

Diagnosis: Angina pectoris, AT

Prior intervention:

Jan. 2025 Ablation (AT)

Coronary risk factor:

HTN, Current smoking

eGFR: 95.4

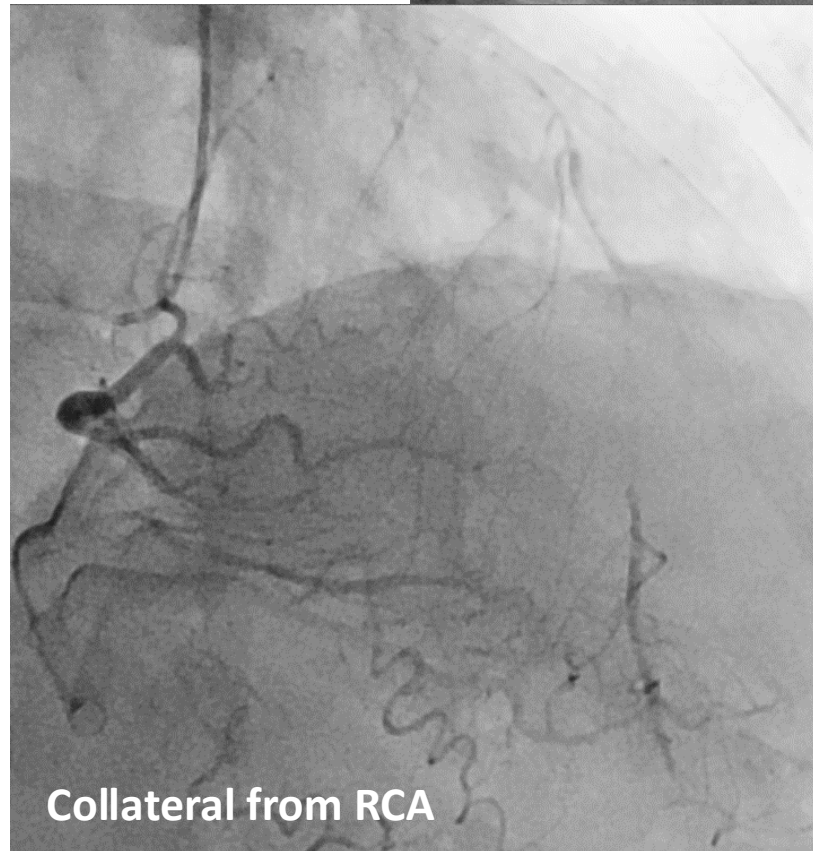
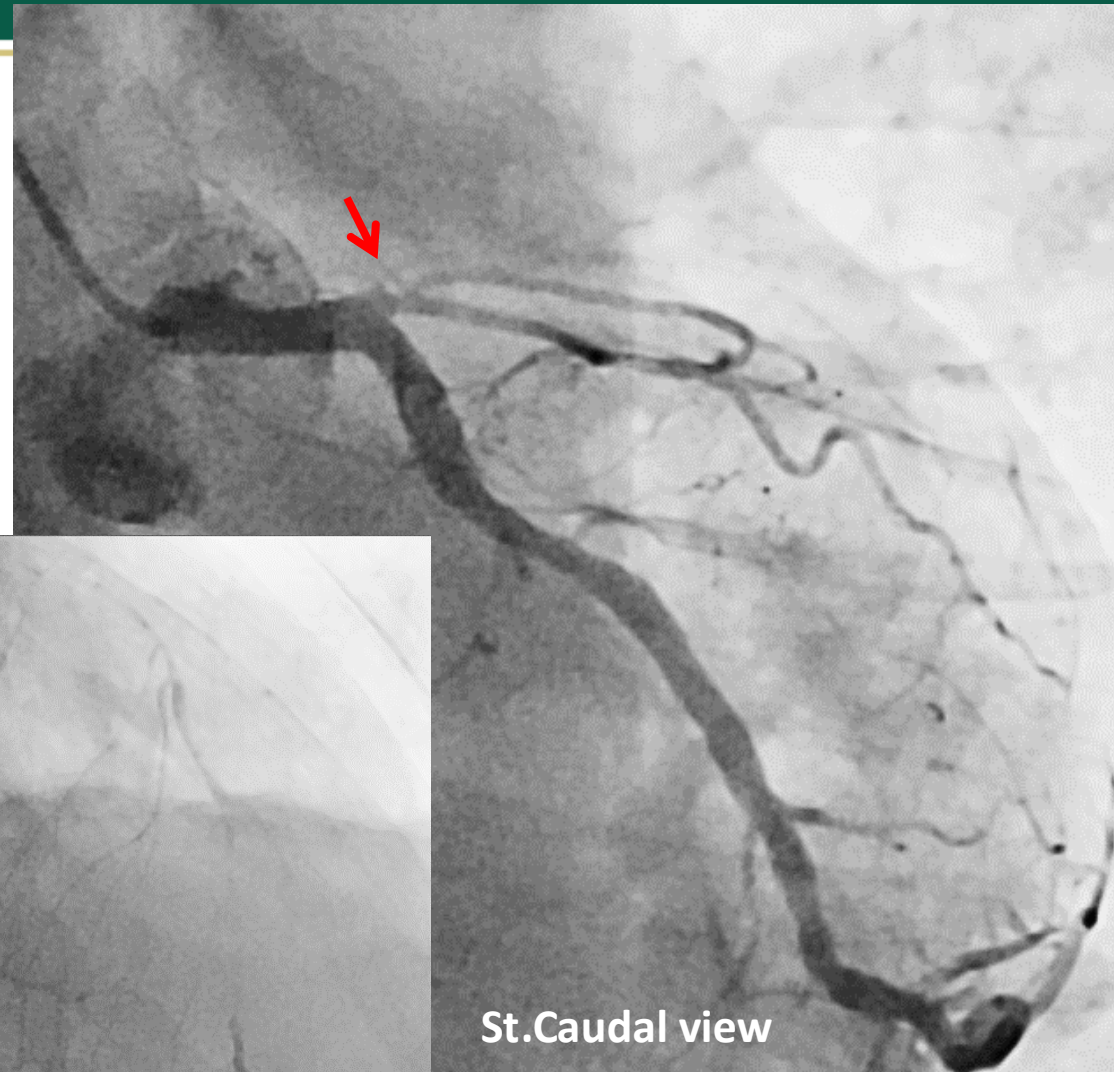
Syntax score: 24.5

J-CTO score: 1

Final CAG findings: Jan. 2025

**CAG: Ost. LAD 100%,
diagonal 100%**

LV EF(UCG): 53.0%



Global Live Case3 70's male

Target Lesion: Ost. LAD

Diagnosis: Angina pectoris

Prior intervention:

**Jan. 2025 Stent (Prox.RCA & mid. RCA CTO)
DCB (AV branch)**

Coronary risk factor:

DM, HTN

eGFR: 5.0 (CRF on HD)

Syntax score: 16

Final CAG findings: Dec. 2024

**CAG: Prox. LAD 90%,
dis. LAD 50-75%,
diagonal 75%,
prox. RCA 75%→0%(Stent),
mid. RCA 100%→0%(Stent)**

LV EF(UCG): 56.1%



2025年2月1日(土)

症例集

オンライン



Case4 70's male

Target Lesion: Prox. RCA

Diagnosis: Angina pectoris

Prior intervention:

none

Coronary risk factor:

DL

eGFR: 71.6

Syntax score: 13

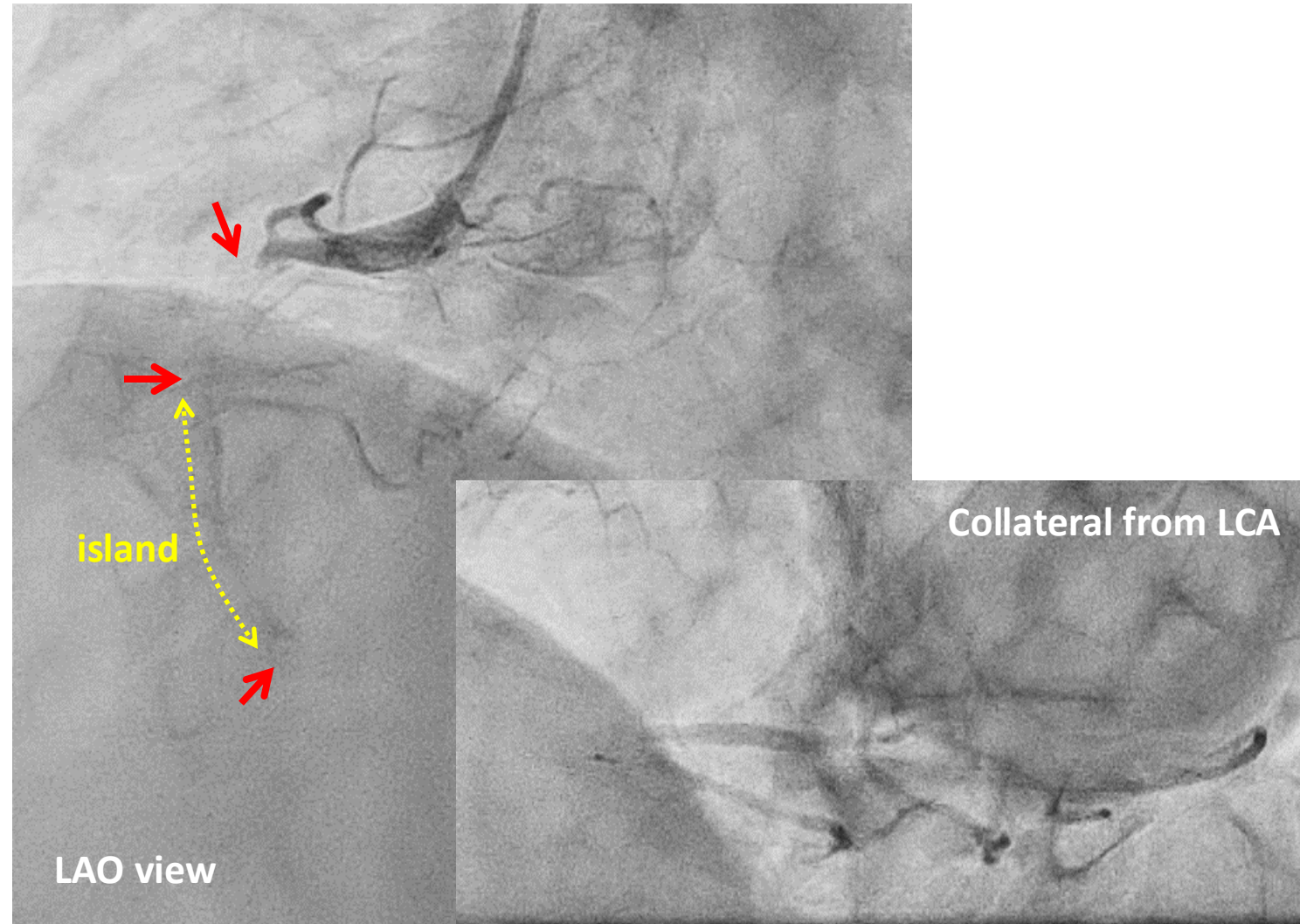
J-CTO score: 2

Final CAG findings: Dec. 2024

**CAG: Prox. RCA 100%,
dis. LCX 90%, HL 90%**

LV EF(UCG): 60.7%

MRI: inferior, infero-septal :ischemia(+)



Case5 60's female

Target Lesion: *Lt.SFA calc.*

Diagnosis: **LEAD, Angina pectoris, post CABG**

ABI: **Rt: 0.47, Lt: 0.43**

Fontaine: **II**

Rutherford: **3**

Prior intervention:

Aug. 2014 Stent (Rt. SFA), other hospital
Jun. 2016 CABG (RITA-LAD, LITA-LCX, SVG-RCA)
Sep. 2020 TEA (Lt.CFA)
CROSSER+DCB (Lt.SFA)
DCB (Rt. SFA)

Risk factor: **DM**

eGFR: **24.0**

CT Angio findings: Dec. 2024

Rt: **CFA 90%, SFA 90%, ATA 90%**

Lt: **SFA 90%, ATA 100%**



Case6 70's male

Target Lesion: Prox. LAD

Diagnosis: Angina pectoris

Prior intervention:

Jan. 2025 Stent (prox. RCA ACS)

Coronary risk factor:

DM, DL

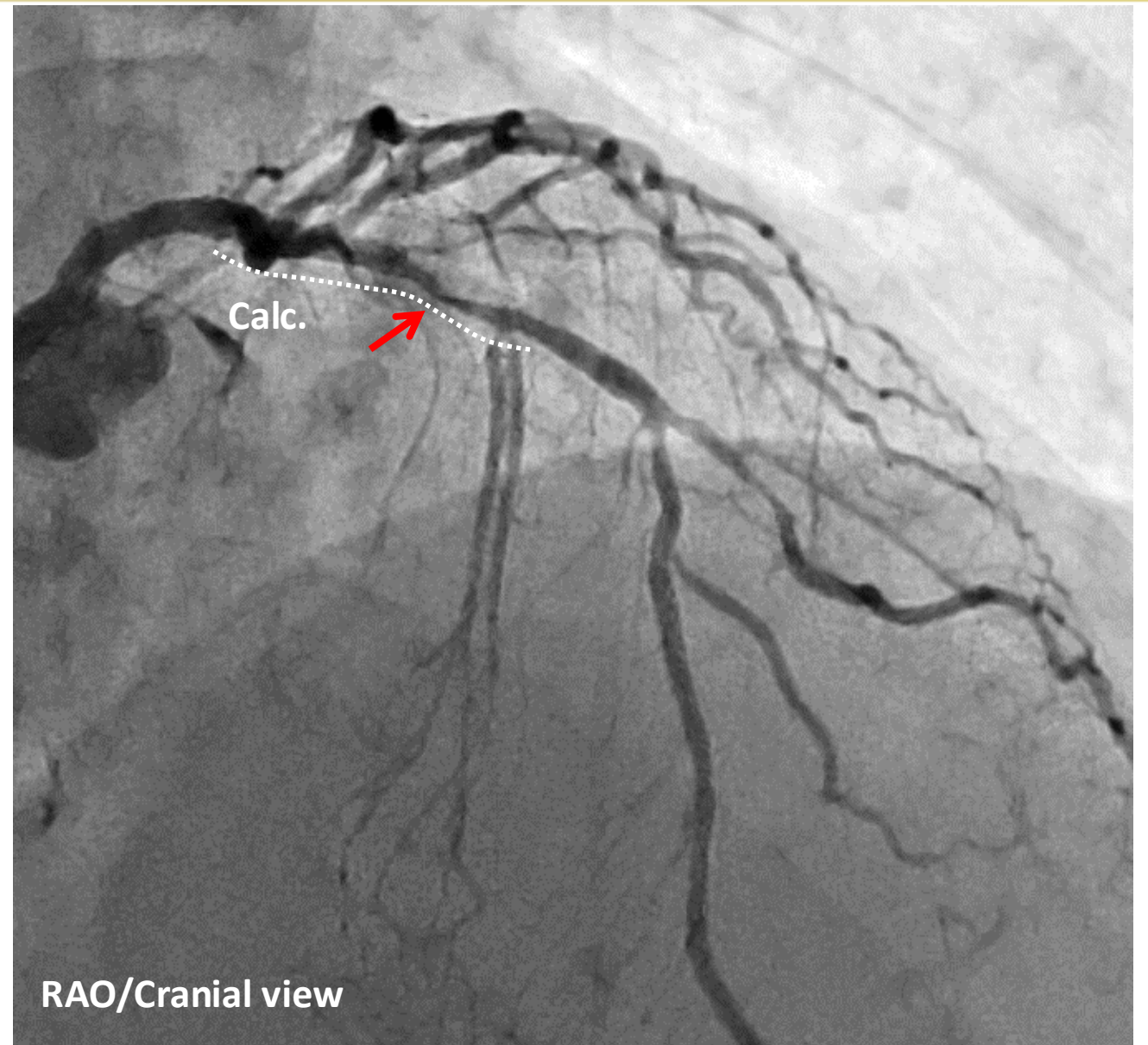
eGFR: 71.6

Syntax score: 24

Final CAG findings: Jan. 2025

**CAG: Prox. LAD 90%,
diagonal 90%,
ost. LCX 75%, HL 99%,
dis. LCX 75%,
prox. RCA 90%→0%(Stent)**

LV EF(UCG): 52.4%



Case7 70's male

Target Lesion: Prox. LAD

Diagnosis: Angina pectoris, DCM

Prior intervention:

Jan. 2025 Stent (mid. LCX CTO)

Coronary risk factor:

DM, DL, smoking

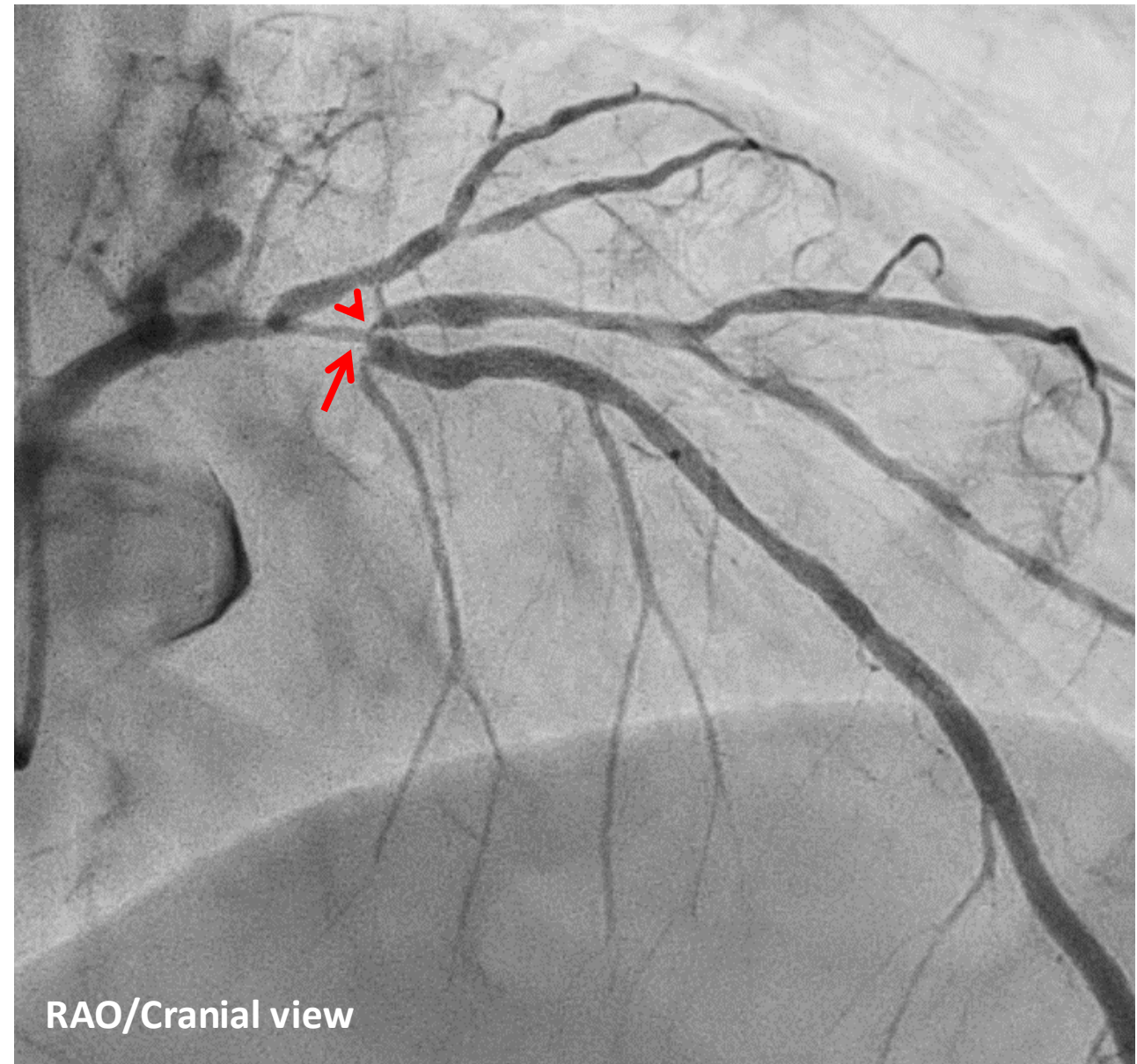
eGFR: 64.0

Syntax score: 17.5

Final CAG findings: Jan. 2025

**CAG: Prox. LAD 90%, 2nd diagonal 90%,
PL branch 90%,
mid. LCX 100→0%(Stent)**

LV EF(UCG): 30.9%



Case 8 70's female

Target Lesion: Lt.SFA calc.

Diagnosis: **LEAD**

ABI: **Rt: 0.92, Lt: 0.80**

Fontaine: **II**

Rutherford: **3**

Prior intervention:

none

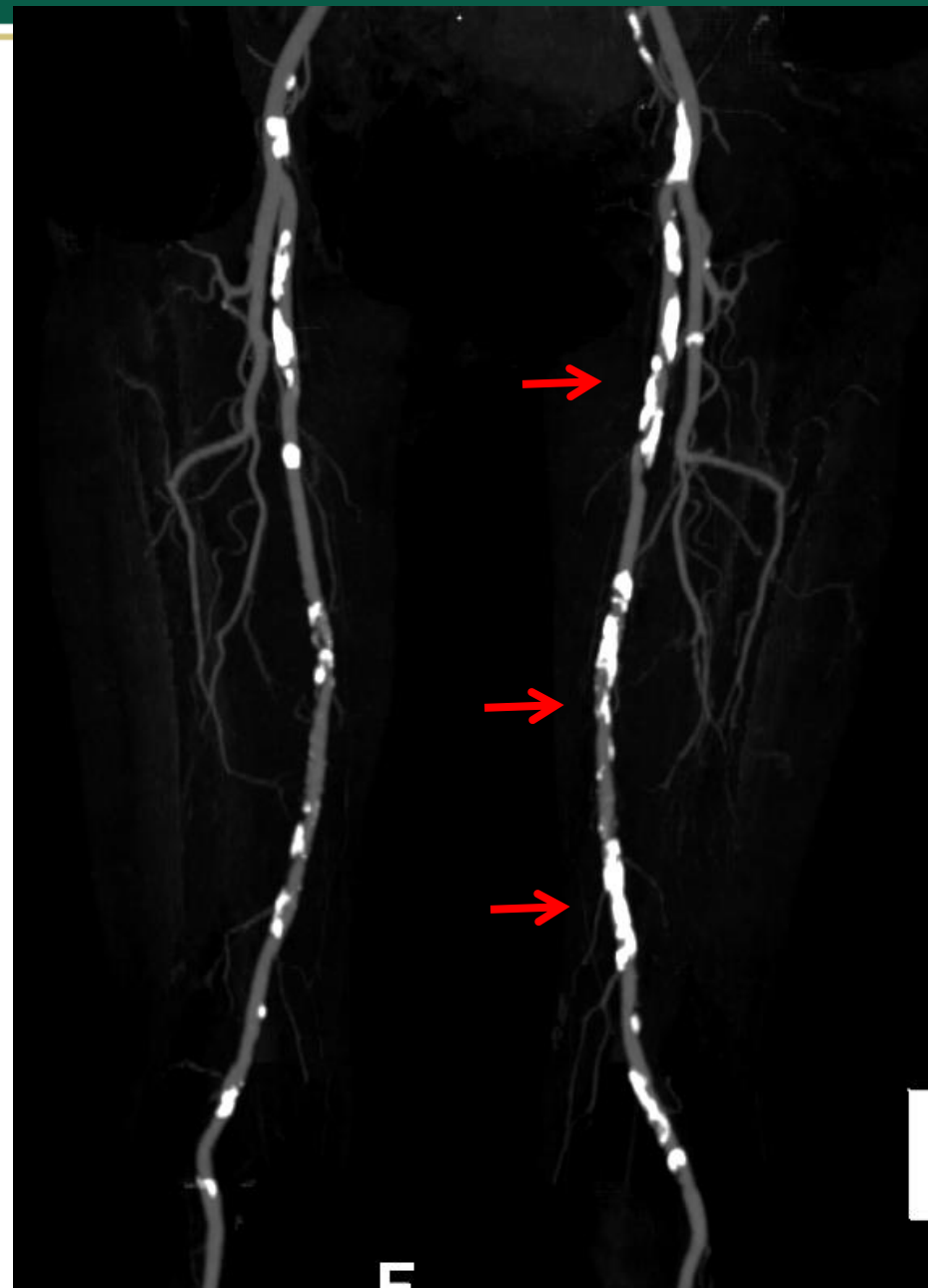
Risk factor: **DM, HTN**

eGFR: **5.1 (CRF on HD)**

CT Angio findings: Nov. 2024

Rt: **SFA 90%**

Lt: **SFA 90%**



Case9 50's male

Target Lesion: Mid. LAD

Diagnosis: Angina pectoris, AF

Prior intervention:

none

Coronary risk factor:

none

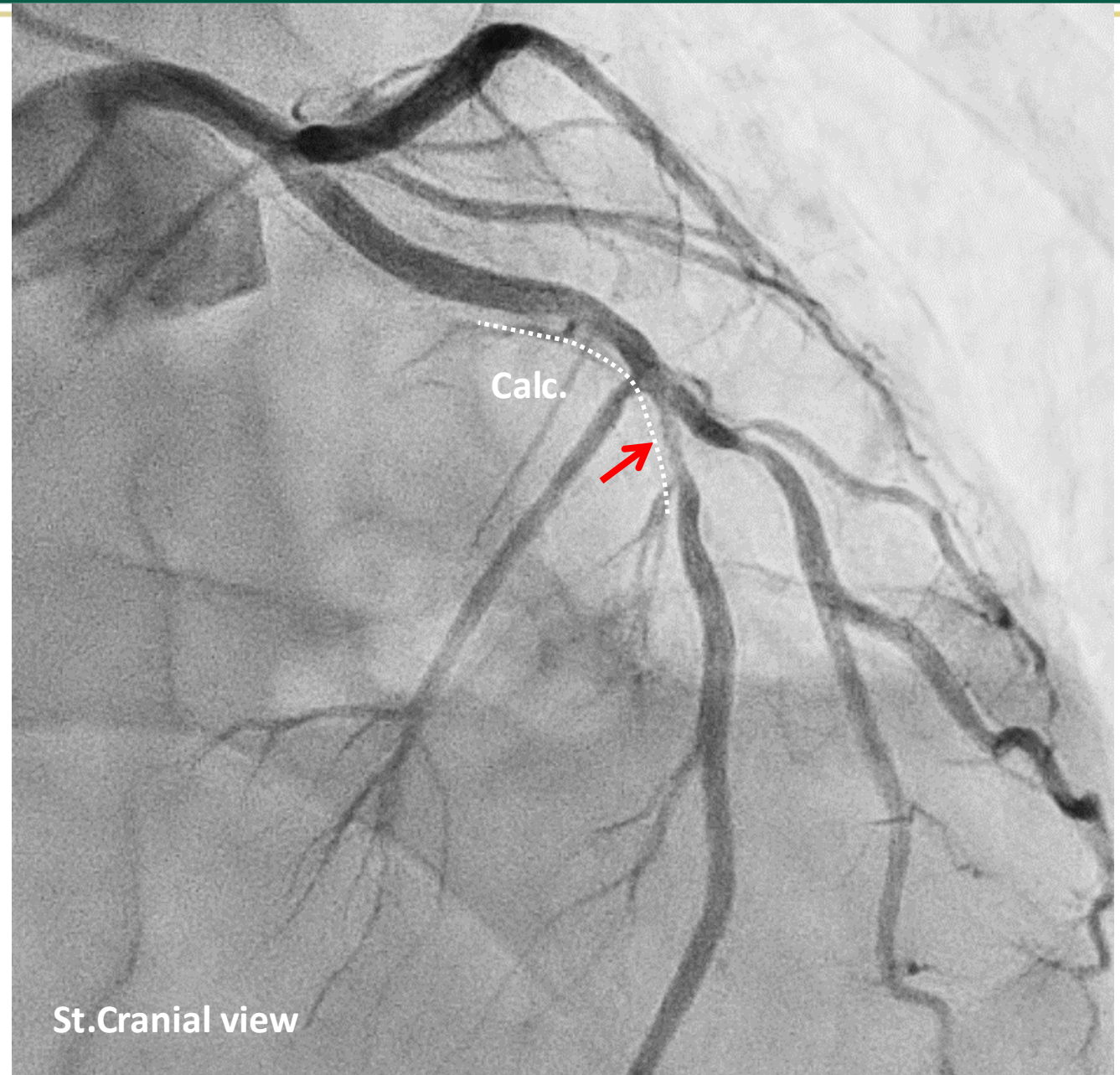
eGFR: 56.1

Syntax score: 9

Final CAG findings: Jan. 2025

CAG: Mid. LAD 90%

LV EF(UCG): 49%



Case10 80's male

Target Lesion: Mid. RCA

Diagnosis: Angina pectoris, OMI, CKD

Prior intervention:

Nov. 2024 Stent (Prox. & Mid. LCX)
POBA (OM branch)
Dec. 2024 Stent (Prox. LAD)
DCB (Diagonal branch)

Coronary risk factor:

HTN

eGFR: 28.5

Syntax score: 26

J-CTO score: 3

Final CAG findings: Oct. 2024

CAG: Mid. RCA 100%,
Prox. LAD 90%→0%(Stent), diagonal 90%→25%(DCB),
Prox. LCX 90%→0%(Stent), Mid. LCX 90%→0%(Stent)

LV EF(UCG): 51.6%

MRI: inferior, infero-septal :ischemia(+)

